

# KINGSFORD SMITH DRIVE UPGRADE

## Community Notice

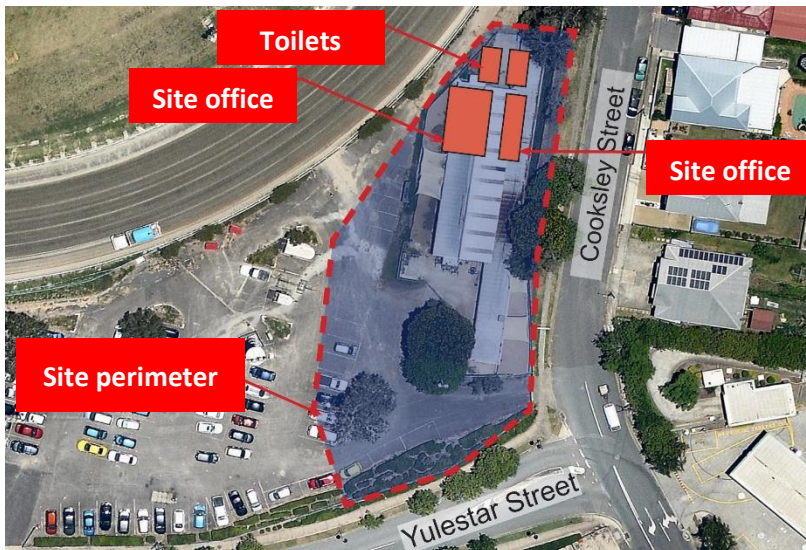
### Site office establishment at Albion Park Raceway, Albion

April 2016

From **mid April 2016**, Lendlease will establish a small site office and workforce parking area at the Albion Park Raceway to allow construction of the Kingsford Smith Drive upgrade.

Lendlease expects the site office to be in place until 2019.

See below for a map showing the location of the site office.



#### Site office construction activities

From mid April, the existing stable structures at the Albion Park Raceway will be demolished to accommodate the project site office.

Demolition activities are expected to take 2-3 weeks to complete. Once the demolition work is complete, demountable buildings will be delivered to create the site office.

#### What to expect

- Use of equipment such as excavators with hammers, vacuum excavators (sucker truck), trucks, saws, scaffold and elevated platforms for building removal.
- Use of licensed contractors to remove any identified hazardous materials and stable structures.
- Selected tree clearing with all required approvals in place.
- Noise associated with use of construction equipment.

We will make every effort to minimise impact of work by:

- ensuring all workforce park in dedicated parking areas and not on local streets
- turning off machinery when not in use
- using white noise (non-tonal) reversing beepers on all machinery
- using dust mitigation strategies such as watering down the site and not removing structures during strong winds.

#### Construction hours

Work will take place from 7am-6pm, Monday to Friday and from 8am-1pm on Saturday. No work is expected to take place on Sundays or public holidays.

#### Working with the community

Lendlease is committed to minimising impacts on local residents during construction of the Kingsford Smith Drive upgrade and we look forward to working with you throughout construction.

Phone: 1800 084 383  
Email: [info@ksdupgrade.com.au](mailto:info@ksdupgrade.com.au)  
Web: [www.ksdupgrade.com.au](http://www.ksdupgrade.com.au)  
Visit: Kingsford Smith Drive upgrade Visitor Centre  
Post: GPO Box 2777, Brisbane, QLD 4001

Designed and constructed by

**lendlease**

An initiative of



*Dedicated to a better Brisbane*