

KINGSFORD SMITH DRIVE UPGRADE

Community Notice

Site office at Bretts Wharf, Hamilton

In preparation for major construction activities starting on the Kingsford Smith Drive upgrade, Lendlease will establish a temporary site office at Bretts Wharf and within a section of Hamilton Park, Hamilton.

Public access to car park closed

To accommodate the temporary site office and final design of the Kingsford Smith Drive upgrade, public access to the car park will permanently close **from late April 2016**.

Access for vehicles to perform **U-turns at the Bretts Wharf intersection will permanently close from mid-2016**.

Hamilton Community Centre demolition activities

To accommodate the temporary site office and the widening of Kingsford Smith Drive, the existing Hamilton Community Centre will be demolished **from late April 2016**.

Demolition activities are expected to take 3-4 weeks to complete. Once the demolition is complete, the temporary site office will be constructed, which is expected to take 2-3 weeks to complete.

What to expect during construction

- Safe removal of building asbestos using licensed contractors, in line with all legislative requirements
- Removal of selected trees in accordance with all required approvals
- Use of equipment such as excavators with hammers, vacuum excavators (sucker truck), trucks, saws, scaffold and elevated platforms for building removal
- Truck movements to deliver equipment to site and remove building debris
- Noise associated with use of equipment during building removal and construction.

April 2016

We will make every effort to minimise work impacts by:

- turning off machinery when not in use
- using white noise (non-tonal) reversing beepers on all machinery
- using dust mitigation strategies such as watering down the site and not removing structures during strong winds.
- maintaining access to the **Bretts Wharf ferry terminal, which will remain open**

Site office at Bretts Wharf, Hamilton

Once constructed, the temporary site office will remain in place for the duration of construction activities. Please see map overleaf for more details regarding the site office layout.

The site office will include a number of demountable buildings for project staff, toilets, and lunch room facilities as well as an area for workforce parking.

Access to the site office will be via Kingsford Smith Drive. Upon completion of the upgrade, the site office will be removed and the impacted area reinstated.

Construction hours

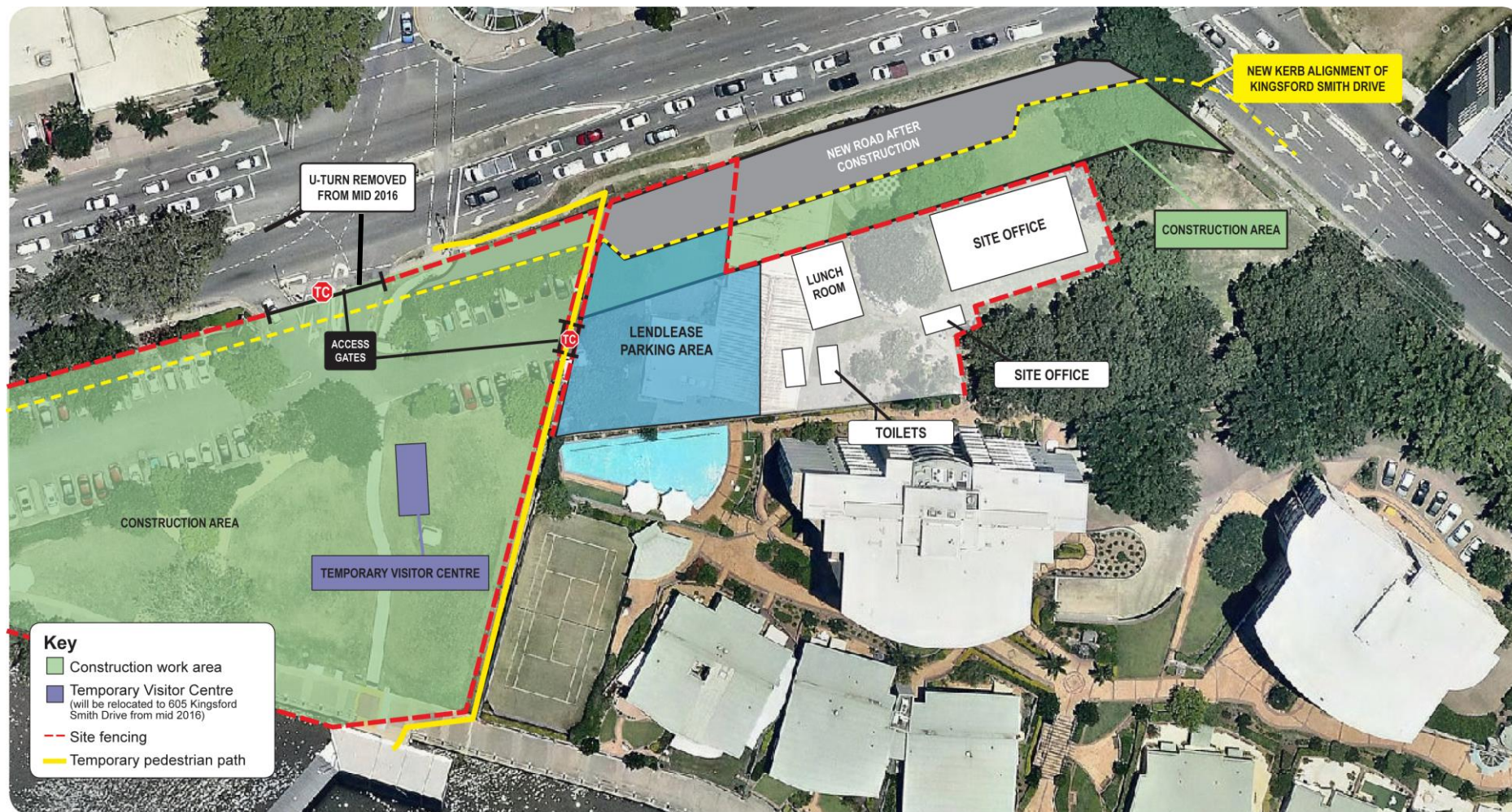
Work will take place from 7am-6pm, Monday to Friday and from 8am-1pm on Saturday. No work is expected to take place on Sundays or public holidays.

Working with the community

Lendlease is committed to minimising impacts on local residents during construction of the Kingsford Smith Drive upgrade and we look forward to working with you throughout construction.

KINGSFORD SMITH DRIVE UPGRADE

Site office
at Bretts
Wharf,
Hamilton



Phone: 1800 084 383
Email: info@ksdupgrade.com.au
Web: www.ksdupgrade.com.au
Visit: Kingsford Smith Drive upgrade Visitor Centre
Post: GPO Box 2777, Brisbane, QLD 4001

Designed and constructed by

lendlease

An initiative of



Dedicated to a better Brisbane