

KINGSFORD SMITH DRIVE UPGRADE

Project construction update

October 2017

During October 2017, the Kingsford Smith Drive upgrade will continue major construction activities.

Land-based activities between Amy Street and Theodore Street will include:

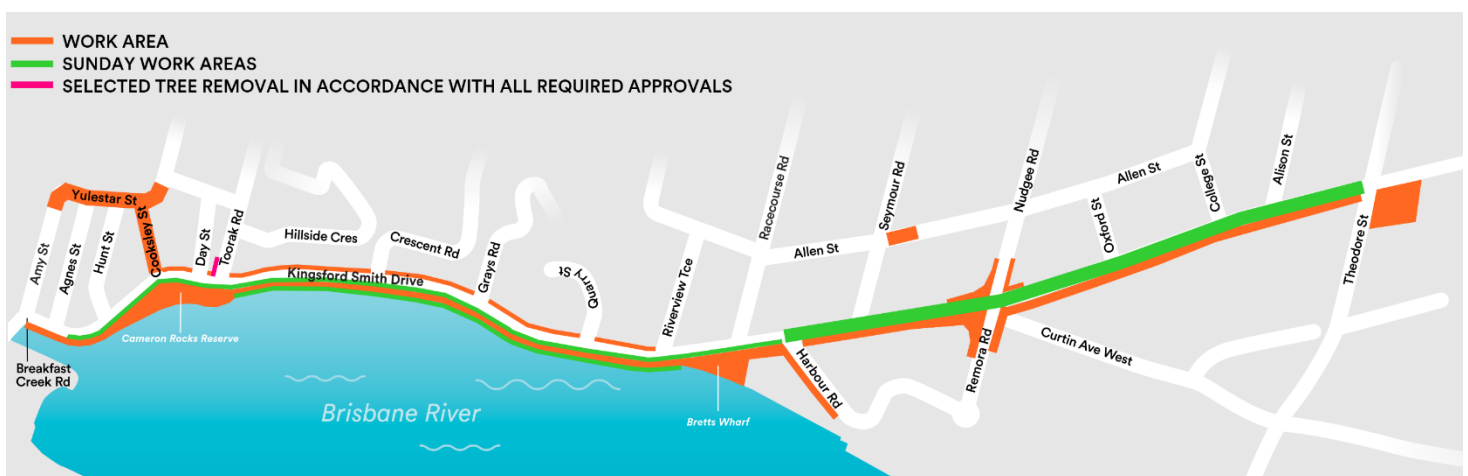
- street light and traffic signal work
- drainage activities
- investigation and installation of underground services
- major earthworks
- removal of centre median
- pavement construction
- asphalt works and line marking
- footpath construction and landscaping
- relocation of concrete traffic barriers
- ground improvement works
- selected tree removal in accordance with all required approvals.

Marine-based construction activities will include:

- installation of scour protection devices
- excavation of the existing river bank retaining wall
- ground improvement works
- piling for the new river walk structure
- production and installation of precast concrete segments that will be used in the river walk structure
- concrete truck deliveries to Bretts Wharf and Cameron Rocks Reserve.

Work will involve:

- use of construction equipment including excavators, trucks, compaction equipment, road saws, vacuum excavators, concrete trucks, small cranes, barges, piling rigs and pumps
- noise associated with the use of construction equipment
- light associated with the use of temporary lighting towers
- vehicles and equipment with flashing lights and white noise (non-tonal) reversing beepers for the safety of onsite workers
- changed traffic conditions including lane, footpath and parking closures, as required
- traffic control and signage to direct pedestrians, cyclists and motorists, as required
- increased barge movements across the river
- night work and Sunday work as required.



Phone: 1800 084 383
Email: info@ksdupgrade.com.au
Web: www.ksdupgrade.com.au
Visit: Kingsford Smith Drive upgrade Visitor Centre
Post: GPO Box 2777, Brisbane, QLD 4001

Designed and constructed by

lendlease

An initiative of



Dedicated to a better Brisbane

KINGSFORD SMITH DRIVE UPGRADE

Temporary road closure – Cooksley Street, Albion

To enable major stormwater installation, Cooksley Street will be closed between Kingsford Smith Drive and York Street on the following weekends:

- 7pm Friday 13 to 5am Monday 16 October 2017
- 7pm Friday 20 to 5am Monday 23 October 2017.

Detours will be in place for all traffic movements during the closure periods. Access to local streets and properties will be maintained by traffic controllers at all times, and signage will be in place to direct all motorists.

In the event of wet weather or unforeseen circumstances, this activity will occur on the next available weekend.

For detailed detour maps and more information about these works, visit www.ksdupgrade.com.au

Why are these works happening?

The Kingsford Smith Drive upgrade will improve the capacity of the road to meet the future needs of the traffic network on one of Brisbane's busiest roads.

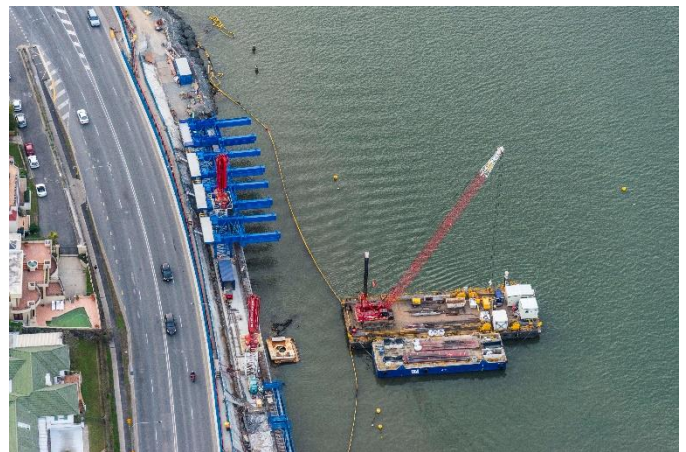
The upgrade involves widening the road from four to six lanes between Theodore Street at Eagle Farm and Cooksley Street at Hamilton. It also includes improvement works between Cooksley Street and Breakfast Creek Road at Albion.

Kingsford Smith Drive upgrade in pictures

Get behind the barriers and check out the latest progress on the Kingsford Smith Drive upgrade with the new photo gallery on our website, www.ksdupgrade.com.au



The KSD/Nudgee/Remora intersection looking east to west



The marine construction area from above

More information

For more information about these works, please phone the team on 1800 084 383 (freecall 24/7) or email info@ksdupgrade.com.au

Phone: 1800 084 383
Email: info@ksdupgrade.com.au
Web: www.ksdupgrade.com.au
Visit: Kingsford Smith Drive upgrade Visitor Centre
Post: GPO Box 2777, Brisbane, QLD 4001

Designed and constructed by

lendlease

An initiative of



Dedicated to a better Brisbane