

KINGSFORD SMITH DRIVE UPGRADE

Community Notice

Major weekend traffic changes – July 2019

June 2019

As recently notified, from early July, major service installation works will be required at the Kingsford Smith Drive and Racecourse Road intersection.

To reduce the duration of these works, some major construction activities will require a **full closure of Racecourse Road at the Kingsford Smith Drive intersection** on the following weekends:

- 7pm Friday 5 July to 5am Monday 8 July
- 7pm Friday 26 July to 5am Monday 29 July.

Significant delays are expected and motorists are encouraged to allow additional travel time or seek alternate routes, where possible. See map overleaf for closures and detour routes.

Pedestrian detours will be in place at Racecourse Road and across Kingsford Smith Drive during the weekend works. See map overleaf for details. Access out of the Hamilton Hotel, Australia Post and the 7-Eleven on Racecourse Road will be maintained throughout construction.

Following the works from Friday 5 to Monday 8 July, major changes at the Racecourse Road intersection will be implemented, including a temporary closure of the left-in and left-out movements to Racecourse Road from Kingsford Smith Drive. For further information about these changes, please contact the project team or visit the project website www.ksdupgrade.com.au

Temporary bus stop and route changes during the weekend works:

- Bus routes 300 and 305 will be detoured via Seymour Road and Kent Street (outbound), and via Lancaster Road and Nudgee Road (inbound)
- See map overleaf for temporary bus stop closures and alternative bus stops where regular services can be accessed from.

What can I expect?

- Works will be completed 24 hours a day, from 7pm Friday to 5am Monday, when traffic volumes on Kingsford Smith Drive and Racecourse Road are lower.
- Construction equipment including excavators, trucks, jackhammers, compaction equipment, road saws, vacuum excavators, small cranes and asphalt equipment.
- Noise and lights associated with the use of construction equipment, including vehicles and equipment with flashing lights and white noise (non-tonal) reversing beepers for the safety of onsite workers.
- Changed traffic conditions, including traffic lane and footpath closures with traffic control and signage to direct pedestrians, cyclists and motorists, as required.

In the event of wet weather or unforeseen circumstances, these works will be carried out on the next available weekend.

Why are these works required?

As part of the Kingsford Smith Drive upgrade, public utility services are being relocated and where required, replaced, to ensure these services continue to meet the needs of the community well into the future. When planning these works, the project team has aimed to balance the often competing needs of businesses, residents and road users as much as possible.

To enable the works, a combination of temporary traffic changes, major weekend closures and out-of-hours works will be required at the Kingsford Smith Drive and Racecourse Road intersection from July to late 2019. By adopting this construction methodology, the overall duration of the works and impact on the local community will be reduced.

Phone: 1800 084 383 (24 hours)
Email: info@ksdupgrade.com
Web: www.ksdupgrade.com.au
Visit: Kingsford Smith Drive upgrade Visitor Centre
605 Kingsford Smith Drive, Hamilton, 4007
Post: GPO Box 2777, Brisbane QLD 4001

Designed and constructed by

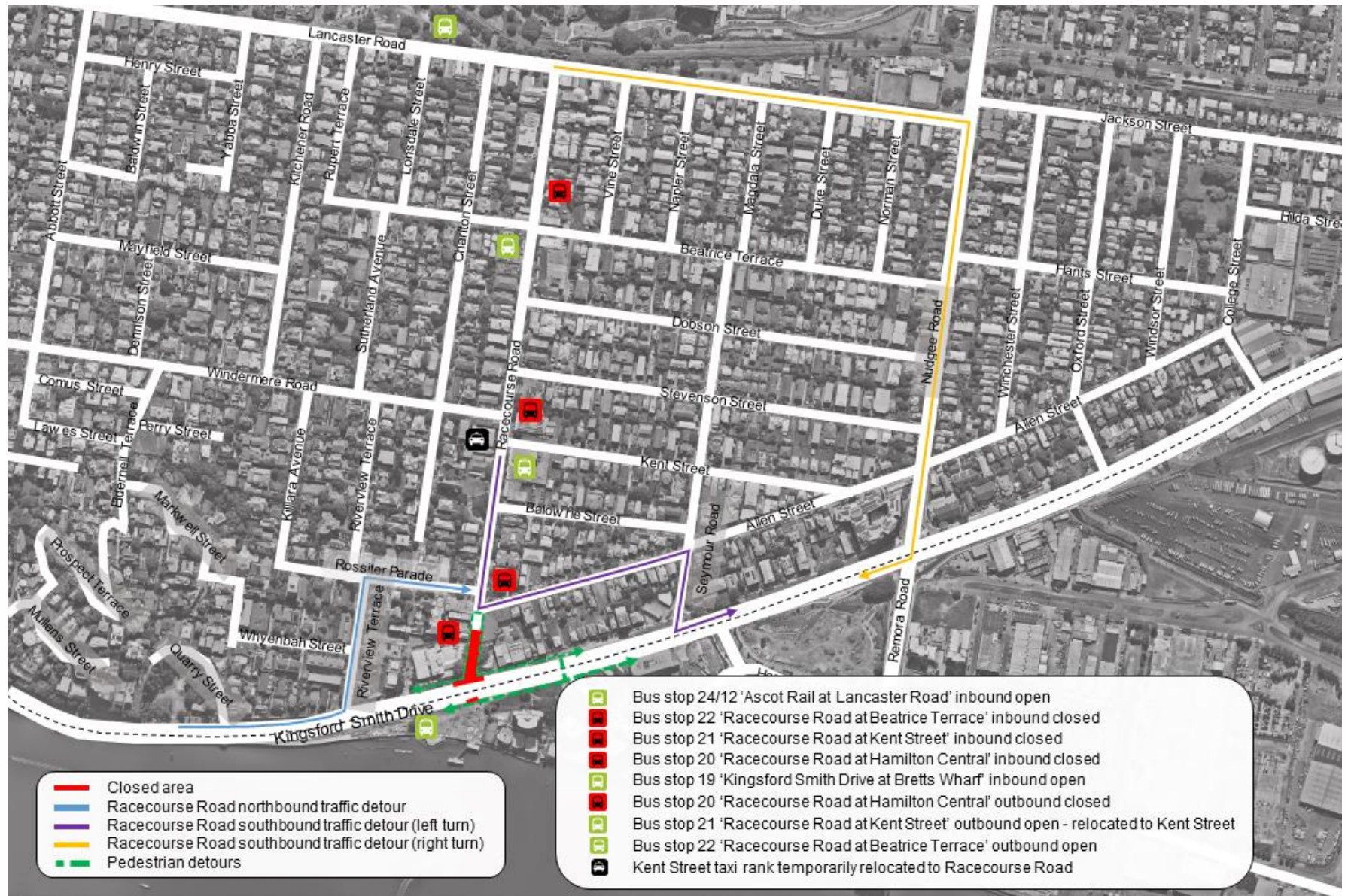
lendlease

An initiative of



Dedicated to a better Brisbane

Major weekend traffic changes – Racecourse Road, Hamilton



For more information regarding planned construction activities, please contact the team on 1800 084 383 or email info@ksdupgrade.com.au