

# KINGSFORD SMITH DRIVE UPGRADE

## Project construction update

September 2019

**Major construction activities will continue on the Kingsford Smith Drive upgrade during September 2019.**

Construction activities between Amy Street and Harbour Road will include:

- street light work and traffic signal changes
- investigation and installation of utility services
- major earthworks
- drainage activities
- pavement construction, asphalt works and line marking
- footpath, kerb and driveway construction
- ground improvement works
- landscaping activities.

Work will involve:

- use of construction equipment including excavators, trucks, jackhammers, road saws, vacuum excavators, concrete trucks, cranes, pumps, asphalt and compaction equipment
- noise and light associated with the use of construction equipment
- changed traffic conditions including lane, footpath and parking closures with traffic control and signage to direct pedestrians, cyclists and motorists, as required
- night work and Sunday work as required.



### RACECOURSE ROAD - OPEN FOR BUSINESS

**Racecourse Road businesses** are open during construction. Racecourse Road is home to more than 100 businesses, including vibrant cafes and bars, unique fashion and homewares, health and beauty services, real estate and professional services.

While it may look different during construction, be assured customers can still access and enjoy the ongoing service and hospitality of these businesses.

Phone: 1800 084 383 (24 hours)  
Email: [info@ksdupgrade.com.au](mailto:info@ksdupgrade.com.au)  
Web: [www.ksdupgrade.com.au](http://www.ksdupgrade.com.au)  
Visit: Kingsford Smith Drive upgrade Visitor Centre  
605 Kingsford Smith Drive, Hamilton, 4007  
Post: GPO Box 2777, Brisbane QLD 4001

Designed and constructed by

**lendlease**

An initiative of



Dedicated to a better Brisbane

## Current traffic changes and closures

Throughout construction of the Kingsford Smith Drive upgrade, changes to traffic conditions and some closures of side roads will be required to enable high impact and complex works.

Due to the location of new underground services, the depth of excavation required to install these services and changes in pavement levels in some areas, temporary closures of side roads are required to provide the necessary space for works to be carried out safely. These temporary closures also allow the majority of construction in these areas to be undertaken during standard hours, reducing works at night and minimising impacts to adjacent residents.

Current traffic changes and closures include:

- **Day Street** at Kingsford Smith Drive closed to traffic in both directions from Monday 19 August for up to eight weeks
- **Crescent Road** at Kingsford Smith Drive closed to traffic in both directions from Monday 5 August to mid-September. From mid-September to mid-October, access to Kingsford Smith Drive from Crescent Road will reopen. Northbound access (left in to Crescent Road) will remain closed during this period.
- **Grays Road** at Kingsford Smith Drive closed to northbound traffic (left in to Grays Road closed) from early August to mid-October. Access to Kingsford Smith Drive from Grays Road will be maintained during this period.
- **Racecourse Road** access from Kingsford Smith Drive remains temporarily closed until November 2019. City-bound access (right turn) to Kingsford Smith Drive remains open.

To keep up-to-date with information about the project, including traffic changes and road closures, you can visit the project website [www.ksdupgrade.com.au](http://www.ksdupgrade.com.au) and register for email notifications.

## Major weekend works

To enable pavement construction on Kingsford Smith Drive between Breakfast Creek Road and Hunt Street and reduce the impact and duration of ongoing night work on local residents, the project team will undertake construction of the new pavement over three weekends in late 2019.

Traffic changes on Kingsford Smith Drive and lane closures at the Cooksley Street intersection will be required during these works.

Further information about these works and associated traffic changes will be distributed prior to the work periods.

Motorists are encouraged to allow additional travel time and seek alternate routes during these works.

## Why are these works happening?

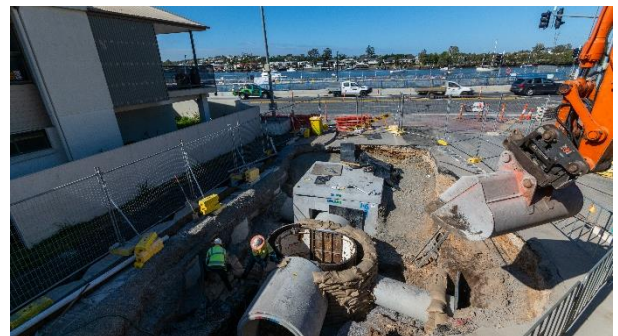
The Kingsford Smith Drive upgrade will improve the capacity of the road to meet the future needs of the traffic network on one of Brisbane's busiest roads.

The upgrade involves widening the road from four to six lanes between Theodore Street at Eagle Farm and Cooksley Street at Hamilton. It also includes improvement works between Cooksley Street and Breakfast Creek Road at Albion.

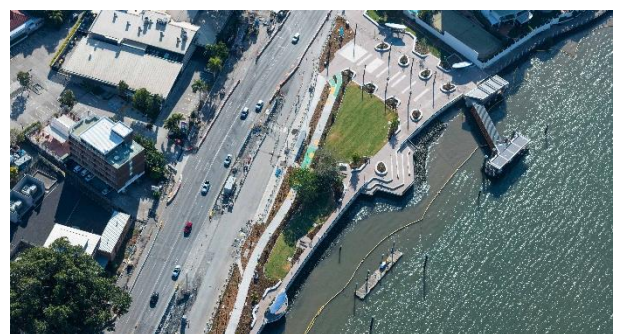
## Photo Gallery

Did you know the Kingsford Smith Drive project photo gallery is updated regularly?

Visit [www.ksdupgrade.com.au/the-project/gallery](http://www.ksdupgrade.com.au/the-project/gallery) to see the latest progress on the project.



*Stormwater installation in Crescent Road*



*The new Bretts Wharf Plaza takes shape*

Phone: 1800 084 383 (24 hours)  
Email: [info@ksdupgrade.com.au](mailto:info@ksdupgrade.com.au)  
Web: [www.ksdupgrade.com.au](http://www.ksdupgrade.com.au)  
Visit: Kingsford Smith Drive upgrade Visitor Centre  
605 Kingsford Smith Drive, Hamilton, 4007  
Post: GPO Box 2777, Brisbane QLD 4001

Designed and constructed by

**lendlease**

An initiative of



*Dedicated to a better Brisbane*